


A&F OBSTACLES | TODAY



EASYNET

A&F CONNECTIONS
In practice and in response to Covid-19

CONNESSIONI A&F
In pratica e in risposta a Covid-19

A&F OBSTACLES
Fourth online meeting
November 25th, 2021
15.30-17.15

LINEA TEMATICA

15:30 Introduction	Marina Davoli
15:40 OBSTACLES AFFECTING A&F IN THE HEALTH SYSTEM	Noah Ivers
16:00 DISCUSSION DISCUSSIONE A&F in EASY-NET	EASY-NET Research Group Chair: Nera Agabiti
17:10 Conclusioni	Marina Davoli


Obiettivi
Quattro meeting online, due a ottobre 2020 e due a novembre 2021, per:
- Promuovere la conoscenza e la consapevolezza della metodologia A&F tra professionisti sanitari e ricercatori.
- Costruire connessioni all'interno della comunità scientifica internazionale.
- Rafforzare la pratica di A&F tra i professionisti e gli operatori sanitari.

Informazioni:
Nera Wendy Di Blasio
Il Pensiero Scientifico
Editore & Think2.it
nera@think2.it

Speakers:
Nera Agabiti - Dipartimento di epidemiologia, SSR del Lazio, Asl Roma 1
Marina Davoli - Dipartimento di epidemiologia, SSR del Lazio, Asl Roma
Noah Ivers - University of Toronto

EASY-NET è un progetto finanziato dal Ministero della Salute (NET-2005-02364191) e cofinanziato dalle Regioni Calabria, Emilia-Romagna, Friuli Venezia Giulia, Lazio, Lombardia, Piemonte.

Per ulteriori informazioni
easy-net.info



15.30 – Introduction

Marina Davoli

15.40 - Obstacles affecting A&F in the health system

Noah Ivers

16.00 – Discussion | A&F in EASY-NET

EASY-NET Research Group

Discussant: Nera Agabiti

17.10 - Conclusion

Marina Davoli | Nera Agabiti

A&F CONNECTIONS. IN PRACTICE AND IN RESPONSE TO COVID-19

The Department of Epidemiology Lazio Region with the support of Il Pensiero Scientifico Editore and the technical assistance of the web agency Think2it, is going to organize, on behalf of the Italian EASY-NET Network - a project funded by the Ministry of Health and six Regional Governments - **a series of four online meetings** on Audit & Feedback (A&F), two in October 2020 15 and 29, and two in November 2021:

-
1. To **promote knowledge and awareness of A&F** methodology amongst health care professionals and researchers.
 2. To **build connections** within the international scientific community
 3. To **strengthen the practice of A&F** amongst Italian professionals and health care operators.
-

FIRST MEETING | INTRODUCTION TO A&F | OCTOBER 15TH, 2020

A&F: HOW TO DO IT



Jeremy Grimshaw

Senior Scientist, Clinical Epidemiology Program,
Ottawa Hospital Research Institute

Full Professor, Department of Medicine, University
of Ottawa

Canada Research Chair in Health Knowledge
Transfer and Uptake

jgrimshaw@ohri.ca

A&F IN ITALY: THE EXPERIENCE OF EASY-NET



Roberto Grilli

Direttore Governo Clinico / Director of Clinical
Governance

Azienda USL – IRCCS di Reggio Emilia / Local
Health Authority - IRCCS of Reggio Emilia

RobertoGiuseppe.Grilli@ausl.re.it



Jamie Brehaut
Professor and Senior Scientist

Ottawa Hospital Research Institute
Clinical Epidemiology Program
Ottawa Hospital, General Campus

jbrehaut@ohri.ca

A&F SUSTAINABILITY | THIRD MEETING | NOVEMBER 11TH, 2021



Sarah Alderson | University of Leeds, UK

General practitioner and Clinical Associate Professor in Primary Care at the University of Leeds.

She is a founder member of the international expert collaborative, the [Audit and Feedback Metalab](#).

Areas of expertise: Implementation research; Embedding interventions within primary care; Audit and feedback interventions & Campaign to Reduce Opioid prescribing; Mental and physical co-morbidity.

Email: S.L.Alderson@leeds.ac.uk

PROFILE

<https://medicinehealth.leeds.ac.uk/medicine/staff/73/dr-sarah-alderson>



Robbie Foy | University of Leeds, UK

Professor of Primary Care at the Leeds Institute of Health Sciences and a general practitioner in Leeds.

His collaborations include the [Audit and Feedback Metalab](#).

His field of work, implementation research, aims to inform policy decisions about how best to use resources to improve the uptake of research findings by evaluating approaches to change professional and organisational behaviour.

Email: R.Foy@leeds.ac.uk

PROFILE

<https://medicinehealth.leeds.ac.uk/medicine/staff/338/professor-robbie-foy>



Noah Ivers MD PhD CCFP

Family Physician, Family Practice Health Centre, Women's College Hospital; Associate Professor, Department of Family and Community Medicine and Institute for Health Policy, Management and Evaluation, and Canada Research Chair, Implementation of Evidence-based Practice, University of Toronto

@noahivers

THE AUDIT & FEEDBACK METALAB



<http://www.ohri.ca/auditfeedback/>

A group of researchers dedicated to improving healthcare outcomes by optimizing performance with Audit & Feedback (A&F).

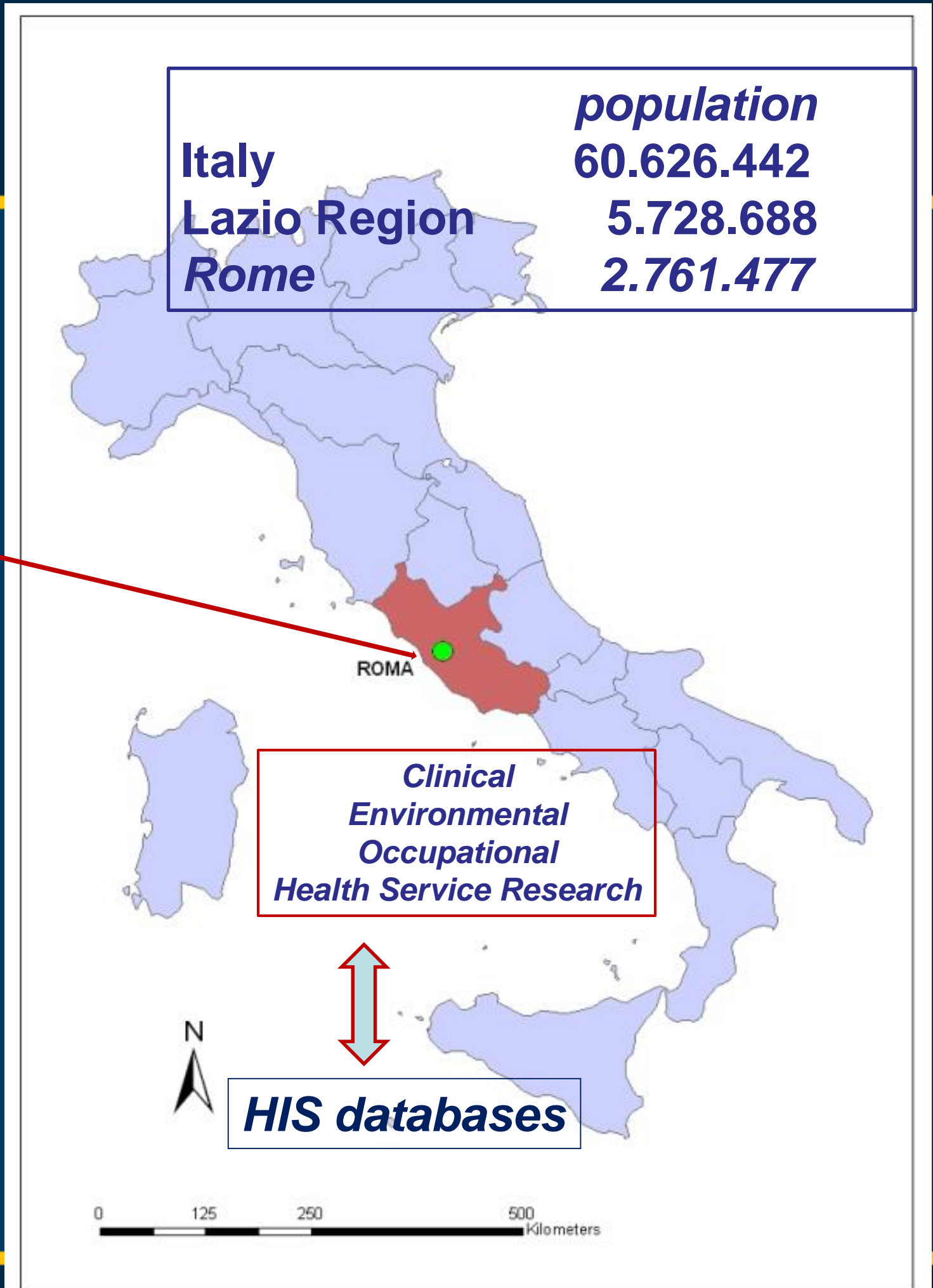
The mission of the A&F MetaLab is to develop an international research and healthcare community to achieve the following:

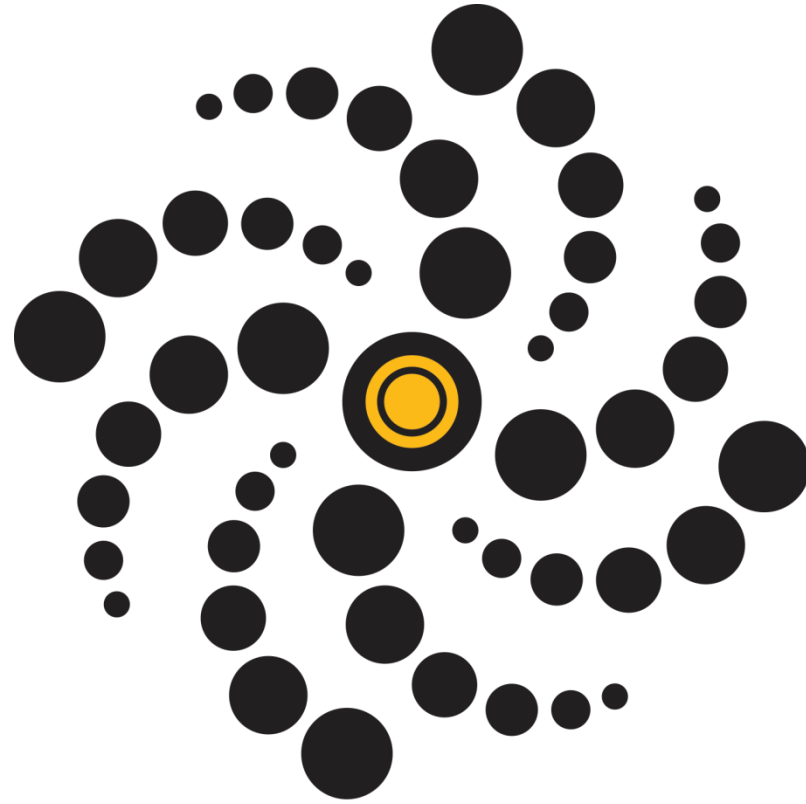
- Encourage shared learning from international A&F implementation laboratories
- Engage with healthcare system partners regarding their use of A&F
- Provide a trusted source of evidence and recommendations for performing A&F
- Develop a repository of international A&F lab members and their expertise
- Encourage the promotion and uptake of A&F evidence
- Synthesise evidence from the A&F implementation lab activities
- Training for building research capacity and practical expertise in A&F
- Develop an ongoing repository of evidence from randomised tests of refinements to A&F in the various national implementation labs



Department of Epidemiology Regional Health Service Lazio, Rome

30 yrs experience in conducting
epidemiological studies





EASYNET

Effectiveness of audit and feedback strategies to improve healthcare practice and equity in various clinical and organizational settings

Funded on Ministry of Health and Italian Regions Lazio, Friuli Venezia Giulia, Piemonte, Emilia Romagna, Lombardia e Calabria

NET-2016-02364191

GAP

**between tra scientific evidence, guidelines and recommendations
and clinical practice**



Variability
Inappropriateness
Inequity

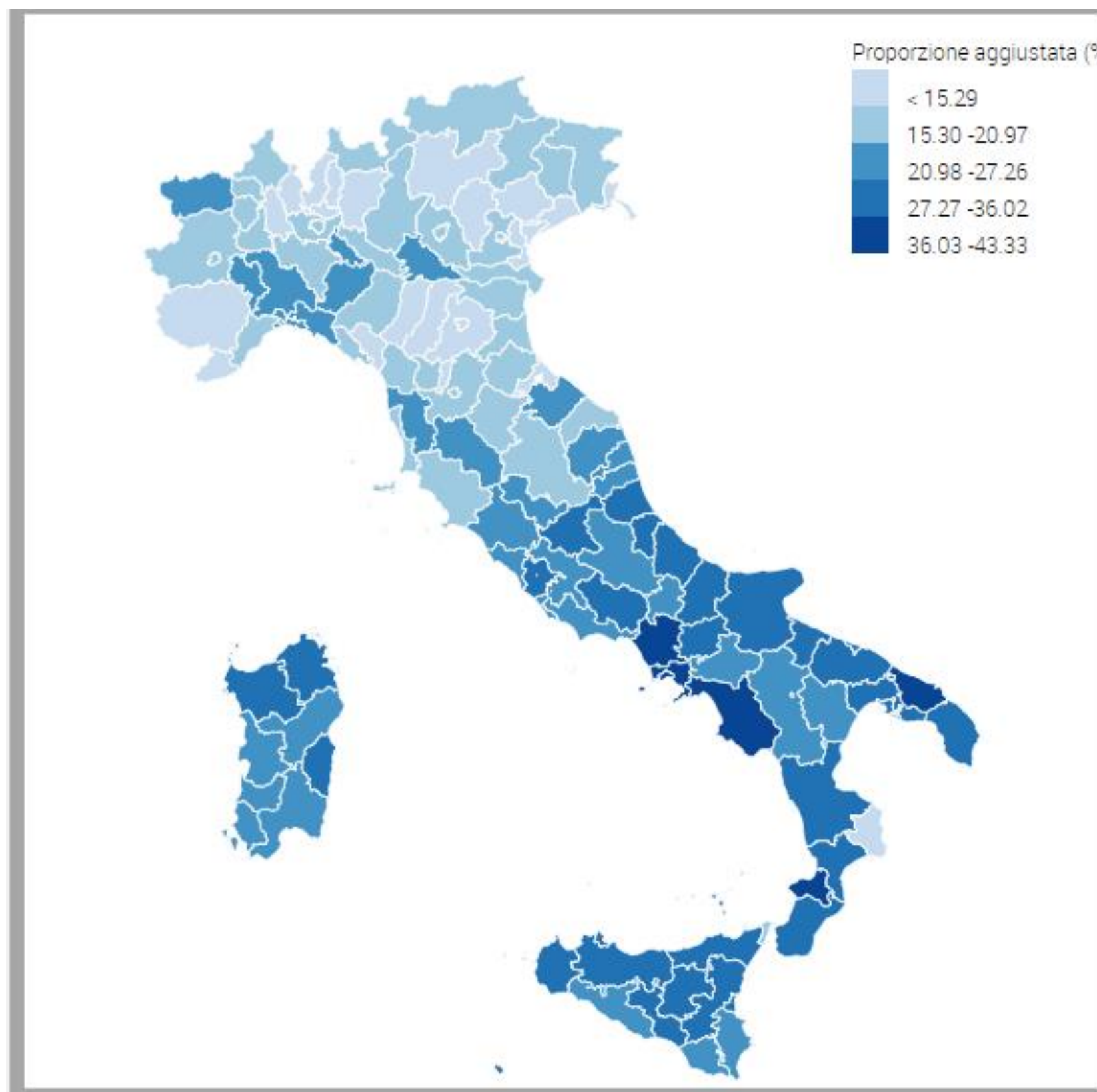


Impact on **OUTCOMES**

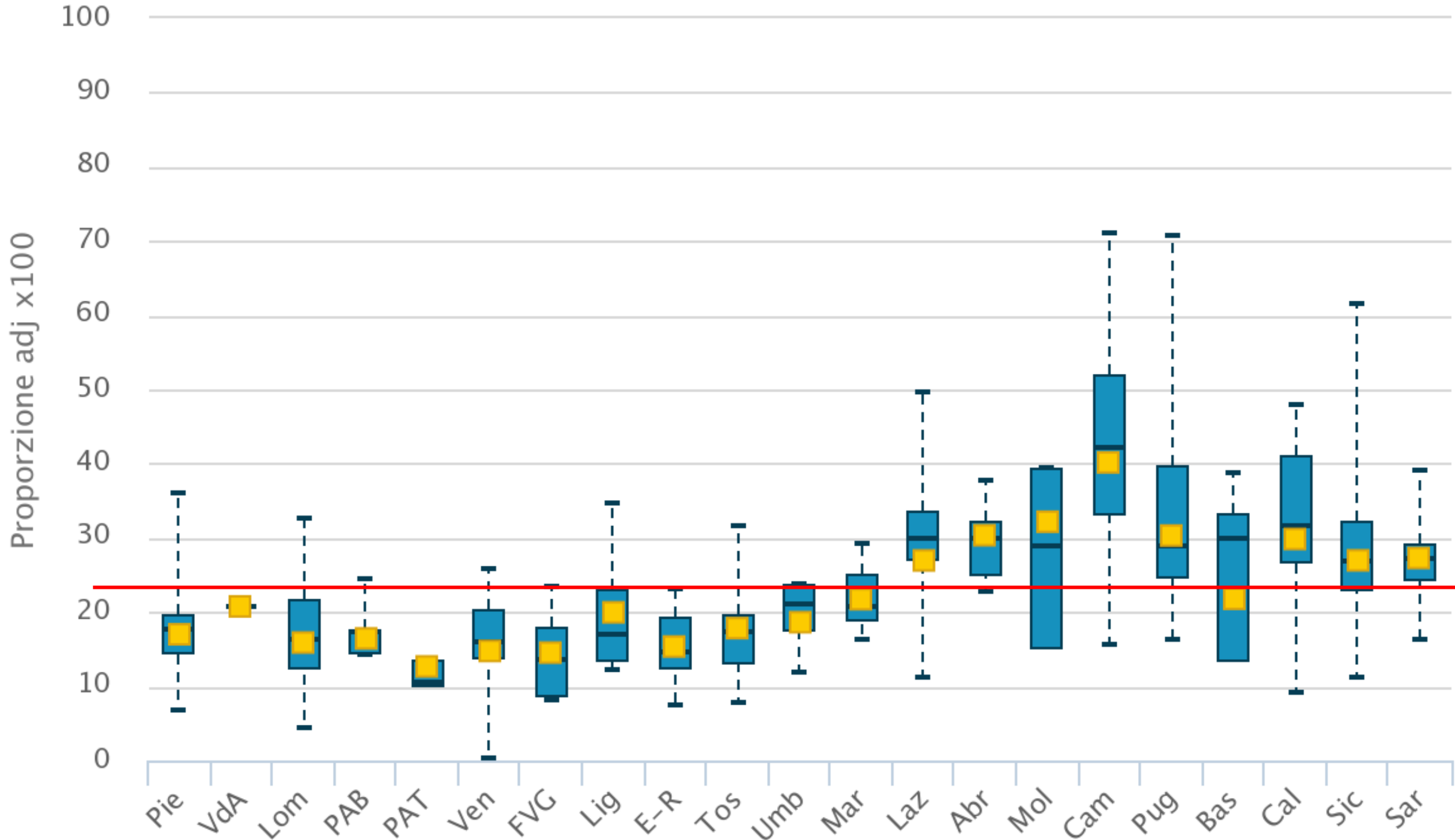
EASY-NET: THE AIMS

1. To test the **effectiveness** of audit and feedback interventions in improving health professional practices and patients' outcomes in **different settings** using both a quantitative and a qualitative approach.
2. To examine **factors that may explain variations** in the effectiveness of audit and feedback and to identify patient-, provider-, organization-, and system-level facilitators or barriers using both a quantitative and a qualitative approach.
3. To evaluate the impact of **audit and feedback** strategies in reducing avoidable differences in access to effective health care interventions in **socioeconomically disadvantaged** populations.

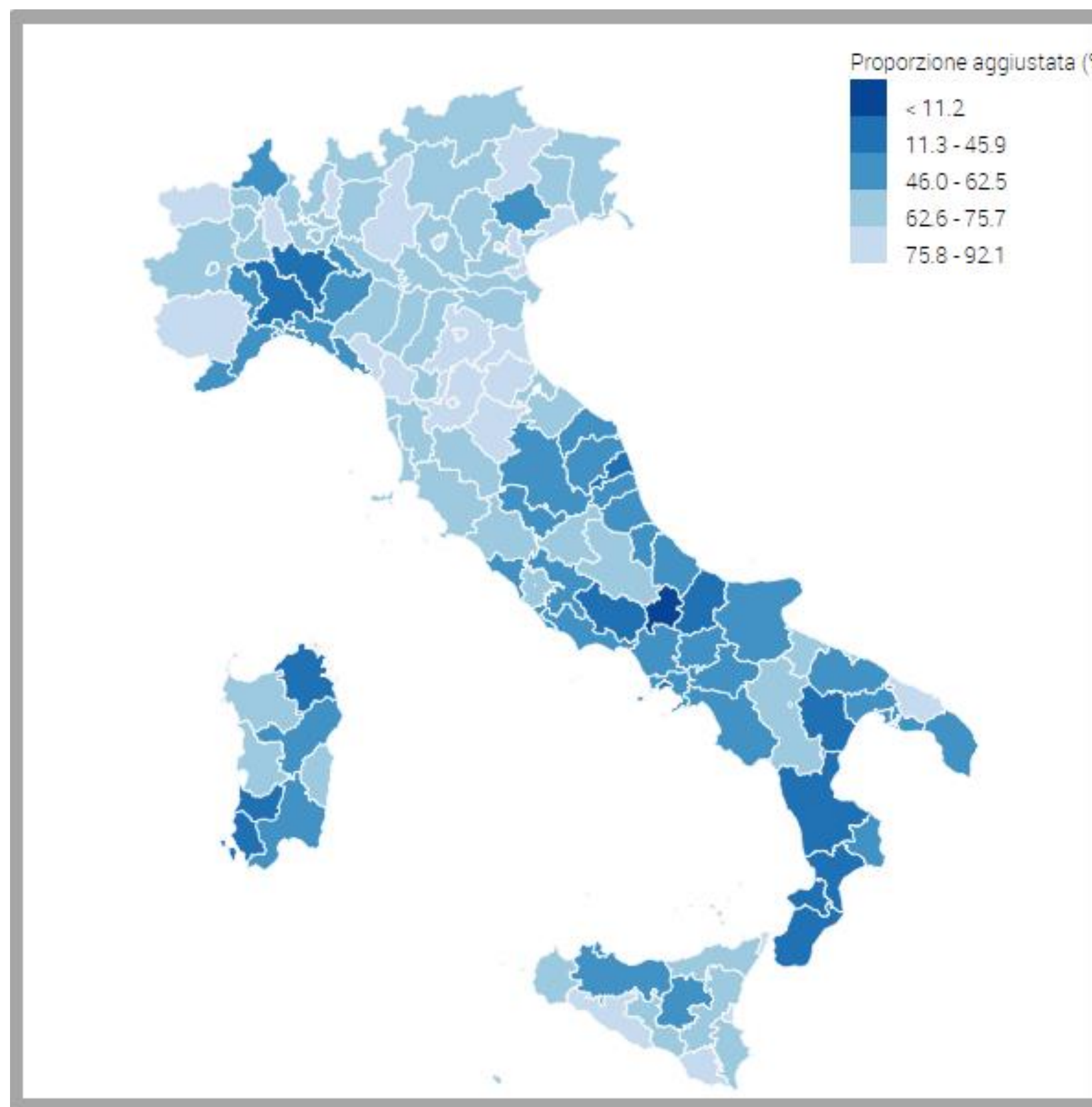
Proportion of primary cesarean sections: variability by area. Italy 2017



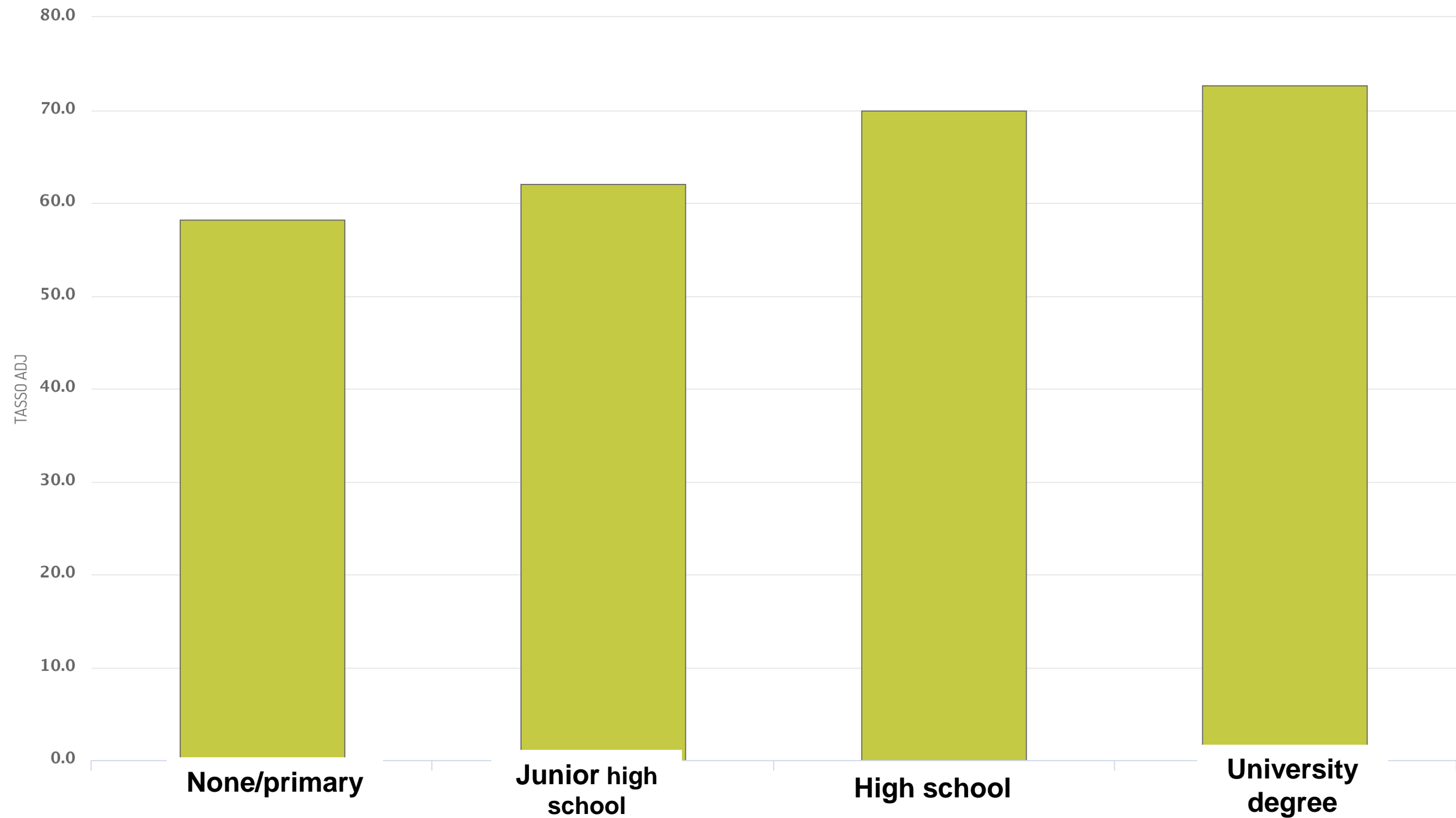
Proportion of primary cesarean sections : variability by region and hospitals. Italy 2017



Hip fracture: surgery within 2 days: variability by area. Italy 2017



Hip fracture: surgery within 2 days: variability by education. Latium 2019



EASY-NET: EXPECTED OUTCOMES

Single Region projects  NETWORK

- ✓ increased knowledge, culture and practice on **A&F**
 - ✓ increased awarenees among health professionals on the need for **high-quality data** to monitor performance
 - ✓ **comparative data on effectiveness of A&F** strategies implemented in different Regions, health services organization, level of care, and patient populations
 - ✓ support for health care organizations to incorporate effective and **equity-oriented** improvement measures into the process of care
-



GOOD HEALTH CARE TO ALL CITIZENS

CLINICAL AND HEALTH SERVICES SETTINGS

WP1 Lazio	Chronicity and Emergency (AMI, stroke)
WP2 FVG	Emergency (AMI, Stroke, Trauma)
WP3 Piemonte	Oncology
WP4 Emilia Romagna	Chronicity
WP5 Lombardia	Cardiovascular
WP6 Calabria	Delivery and Maternal Health
WP7 Sicilia	Cardio and cerebrovascular